

## Ranges

**Static (Ps)** 32.1480 to 0.2046 inHg  
**Pitot (Pt)** 0.6449 to 112.3230 inHg

## Accuracy

**Static (Ps)**  $\pm 0.003$  inHg or 0.008% FS  
**Pitot (Pt)**  $\pm 0.004$  inHg or 0.008% FS

## Units of Measurement

feet, meters, km, mbar, knots, inHg, mmHg, mbar,  
 Qc, PSID, PSIA, Total Pressure (Pt), inH<sub>2</sub>O, MACH

# ADC Series

Expansive 10.4-inch  
touchscreen display

Intuitive Graphical  
User Interface

Automated test and  
calibration software apps  
for ADTS405F, ADTS415F,  
DPS500, ADTS-3350ER,  
ADTS-3300JS and TTU-205J



## ADC-2500V3 Air Data Calibrator

NSN: **6695-01-686-5413**

The ADC Series is an industry leading calibrator, capable of controlling and measuring Static (Ps) Altitude and Pitot (Pt) Airspeed pressures to the highest degree of accuracy. The calibrator has a proven history for long term stability, accuracy and performance. The control and measurement ranges meet or exceed the requirements for most commercial and military applications with test requirements for RVSM.

The calibrator features RS-232 and IEEE-488.2 (GPIB) interfaces for remote operation. Hardware and software safety features provide maximum protection to the operator and unit under test. Test Program allows the operator to create customized test routines, providing improved test consistency while reducing touch labor.

The ADC Series is configurable with software applications installed which can provide automated test and calibration for various air data test

sets. ADTS4X5F software provides automated test and calibration for the ADTS405F, ADTS415F and DPS500 (and variants); EccADC software provides automated test and calibration for TTU-205J; and ADTSCal software provides automated test and calibration for ADTS-3350ER, ADTS-3350MR, ADTS-3300JS. The applications provide increased test consistencies while lowering touch labor hours and costs for testing and calibration.



ADTS-3300 Series Software



ADTS 405F / 415F Software

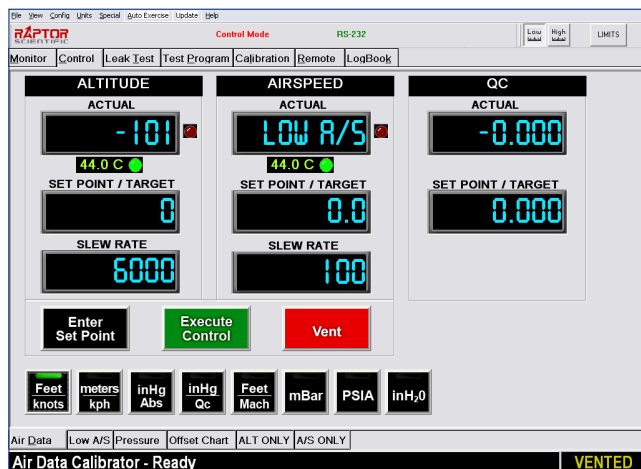


## ADC-2500V3 Specifications

Altitude (Ps) Range	-2,000 to 109,985 ft (32.1480 to 0.2046 inHg)
Static (Ps) Sensor	0.350 to 38.000 inHg
Static (Ps) Accuracy	± 0.003 inHg or 0.008% FS, whichever is greater
Altitude Rate	0 to 50,000 ft/min (40.0 inHg/min)
Altitude Resolution	1 ft, 0.01 mbar, 0.0001 inHg (Ps), 0.01 mmHg
Altitude Units	feet, meters, inHg, mmHg, mbar, hPa, PSIA
Airspeed (Pt) Range	0 to 1,000 knots
Pitot (Pt) Sensor	0.350 to 110.000 inHg
Pitot (Pt) Accuracy	± 0.004 inHg or 0.008% FS, whichever is greater
Airspeed Rate	0 to 800 kts/min (40.0 inHg/min)
Airspeed Resolution	0.1 kt, 0.01 mbar, 0.0001 inHg (Pt), 0.01 mmHg
Airspeed Units	IAS/CAS, kts, Mach, inHg, mmHg, mbar, hPa, PSIA, kph
Control Stability	0.001% FS (Absolute or Differential)
Operating Medium	Clean Dry Air or Nitrogen
Display	10.4-inch with Projected Capacitive (PCAP) Touchscreen
Interfaces	TTU-205J, RS-232 (DB9), USB, LAN, VGA, IEEE-488.2
Altitude (Static) Port	Standard: Male JIC 37° -6 AN Stainless Steel bulkhead
Airspeed (Pitot) Port	Standard: Male JIC 37° -4 AN Stainless Steel bulkhead
Calibration Cycle	One (1) year
Power	90-265 VAC, 45 - 440 Hz, 1 Phase
Dimensions	19.0 x 10.5 x 20.0 in (19-inch rackmount)
Weight	38 lbs (17.24 kg)

## Intuitive Graphical User Interface

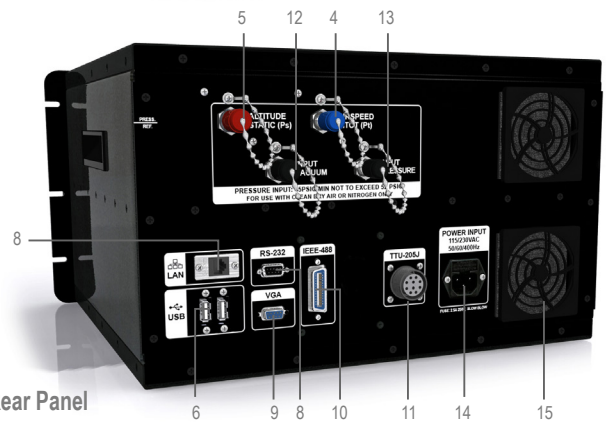
The ADC Series software and additional apps feature an intuitive user interface which is easy to use and has a low learning curve. Operators select modes of operation from tabs and sub-tabs selectable using the touchscreen or mouse and keyboard.



## Front Panel Features



Front Panel



Rear Panel

- 10.4-inch touch display
- Manual Vent valve
- Power switch
- Airspeed Pitot (Pt) input
- Altitude Static (Ps) input
- USB ports (3)
- Ethernet (LAN) port
- RS-232 interface
- VGA (HD15) port
- IEEE-488.2 interface
- TTU-205J interface
- Input Vacuum
- Input Pressure input
- AC Power Input
- Fans

## Vacuum and Pressure Sources

Pressure and Vacuum sources are required when using the ADC Series as a controller. Our line of oil-free pressure and vacuum sources provide clean, dry air to the calibrator. Standalone, benchtop and rackmount options are available.

### Pressure Source

P/N: ADC-2500-PRES-115  
NSN: 6830-01-653-2523  
P/N: ADC-2500-PRES-230

### Vacuum Source

P/N: ADC-2500-VAC-115  
NSN: 4310-01-653-2521  
P/N: ADC-2500-VAC-230  
NSN: 4310-01-670-3652



Compact, high performance oil-free vacuum source features a hermetic design providing a robust pumping speed of 60 Lpm and a low base pressure. 115 and 230 models available.

19-inch rackmount PRU Series provides Pressure only or the VPU Series provides both Vacuum and Pressure - single or dual output options available.

